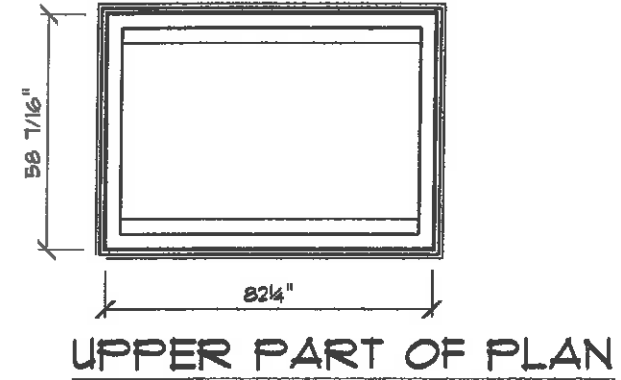
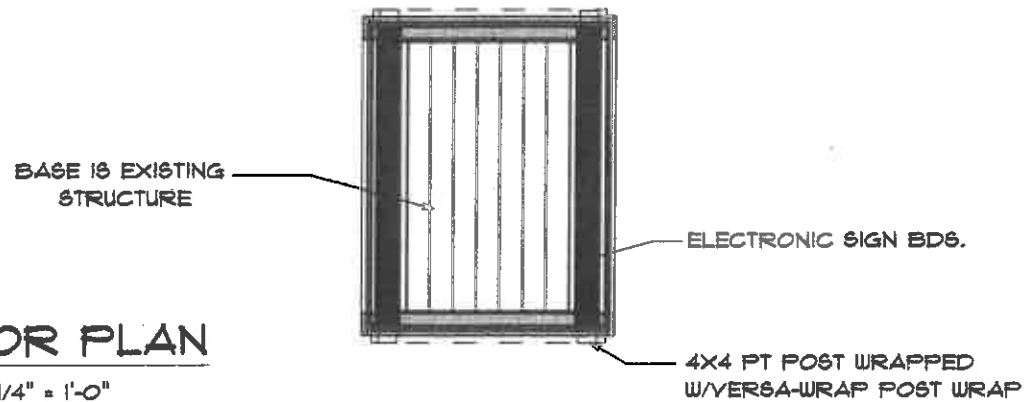


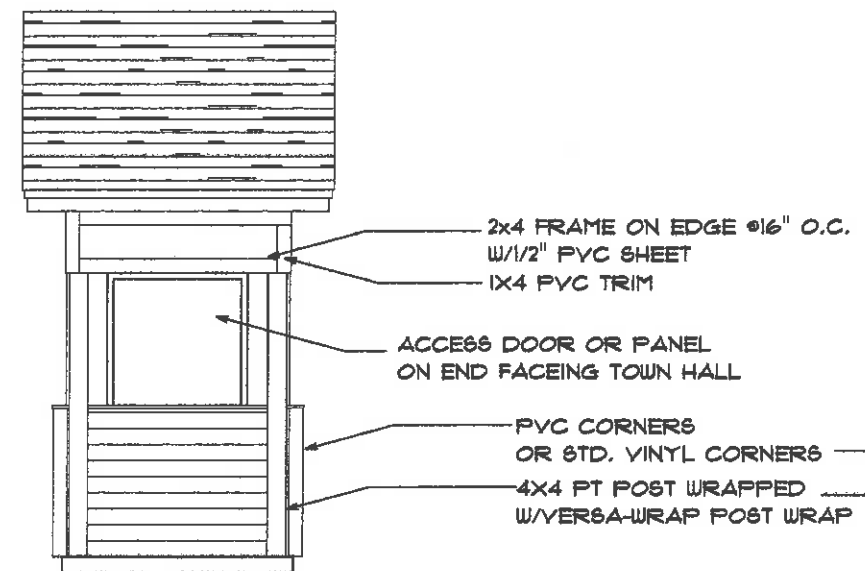


TOWN OF LYMAN
1780

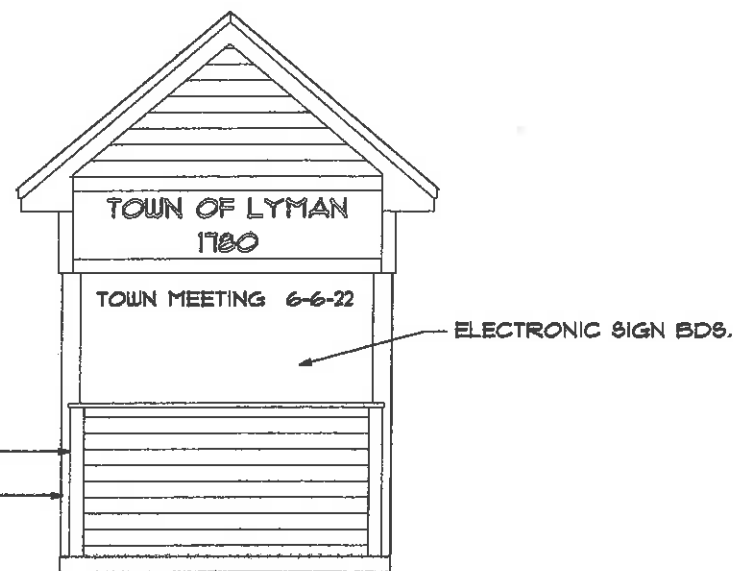
FLOOR PLAN
SCALE: 1/4" = 1'-0"



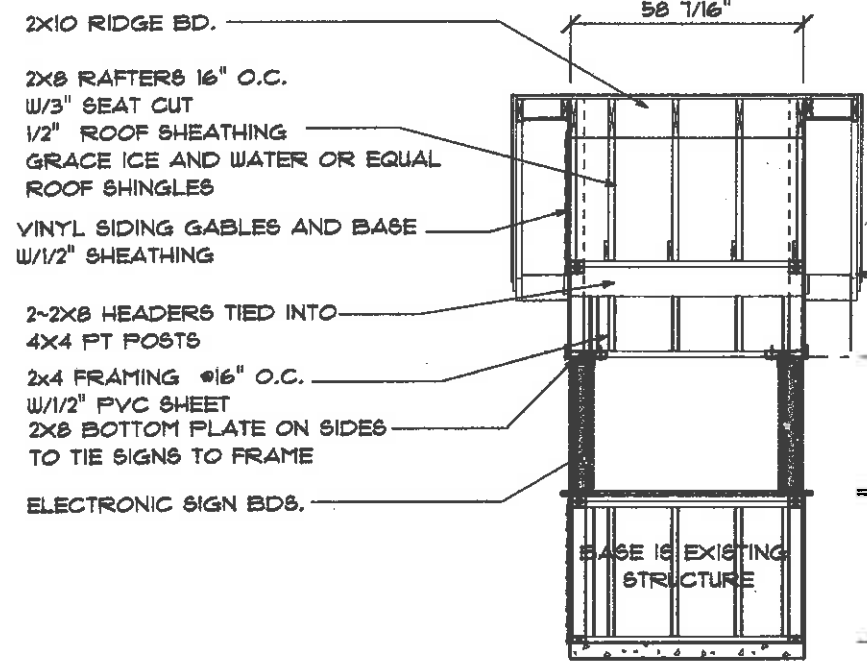
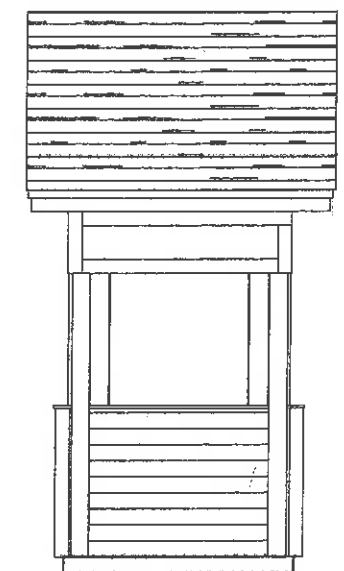
REAR ELEVATION
SCALE: 1/4" = 1'-0"



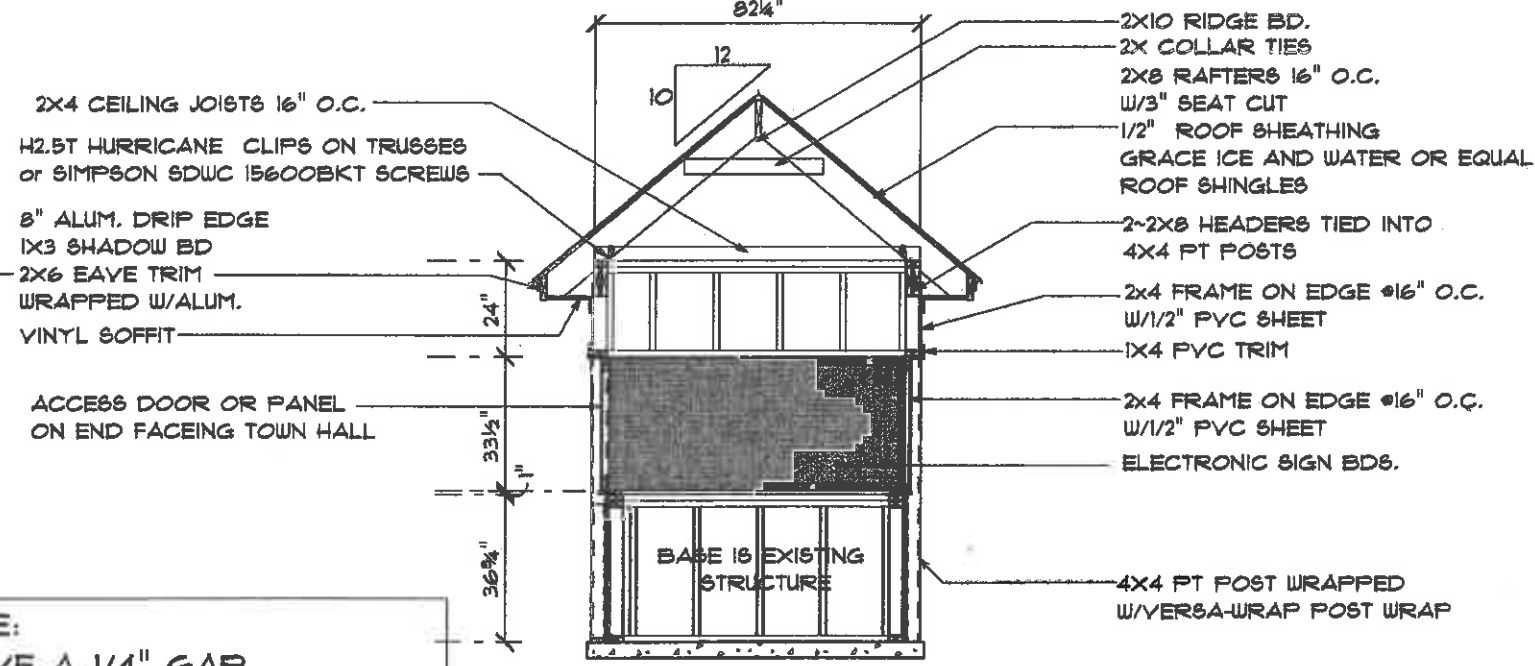
SIDE ELEVATIONS
SCALE: 1/4" = 1'-0"



FRONT ELEVATION
SCALE: 1/4" = 1'-0"



CROSS SECTION
SCALE: 1/4" = 1'-0"



CROSS SECTION
SCALE: 1/4" = 1'-0"

NOTE:
LEAVE A 1/4" GAP
BETWEEN SIGN AND FRAMING
ON THE TOP AND SIDES